

# Customer Information Sheet

DRAWING No.: M80-29600XX & M80-29700XX SHT 2 OF 2

IF IN DOUBT - ASK

©

NOT TO SCALE

THIRD ANGLE PROJECTION

ALL DIMENSIONS IN mm

## SPECIFICATION:

MATERIAL:  
BERYLLIUM COPPER

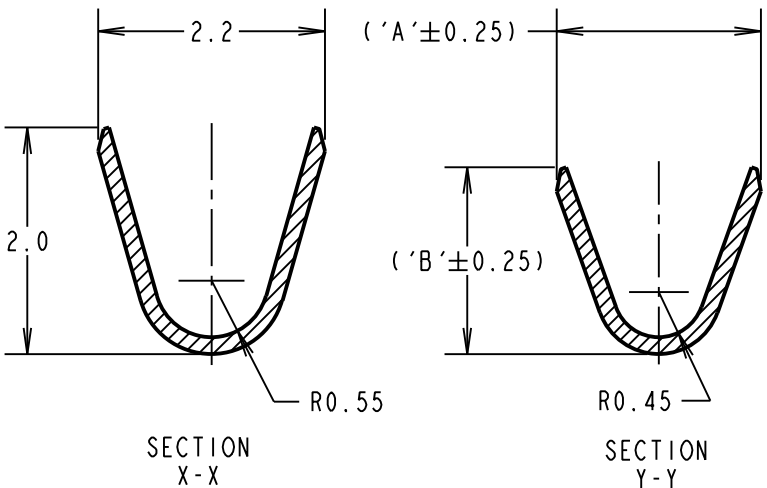
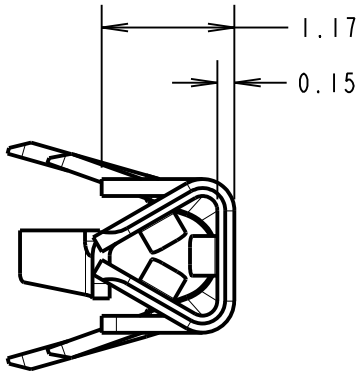
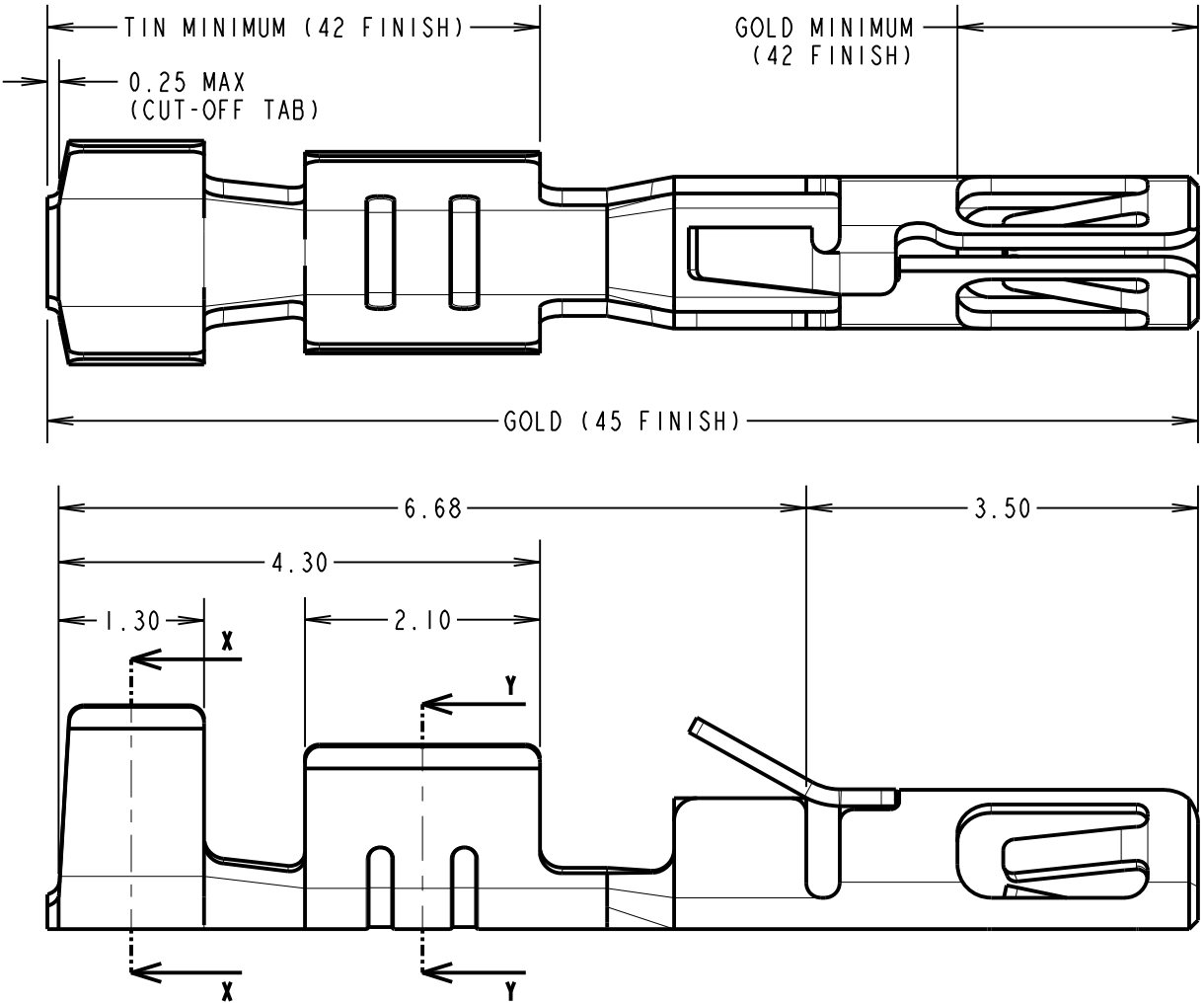
FINISH:  
45 = 0.76μ MIN GOLD, ALL OVER  
42 = 3μ MIN 100% TIN AND 0.76μ MIN GOLD,  
SELECTIVE PLATE  
ALL FINISHES = NICKEL UNDERPLATE

MECHANICAL:  
INSERTION FORCE = 2.8N MAX, 1.0N MIN  
WITHDRAWAL FORCE = 1.8N MAX, 0.2N MIN  
DURABILITY = 400 OPERATIONS

ENVIRONMENTAL:  
OPERATING TEMPERATURE = -55°C TO +125°C

PACKING:  
LOOSE, 100/BAG ONE OR MORE BAGS PER BOX

FOR COMPLETE CONNECTOR SPECIFICATION, SEE  
COMPONENT SPECIFICATION C040XX (LATEST ISSUE)



## NOTES:

- TO BE USED WITH THE FOLLOWING FEMALE HOUSING:  
M80-454XX98 = HOUSING ONLY  
M80-455XX98 = HOUSING + SLOTTED JACKSCREW  
M80-456XX98 = HOUSING + HEX SOCKET JACKSCREW  
M80-457XX98 = HOUSING + REVERSE FIX JACKSCREW  
M80-458XX98 = HOUSING + GUIDE AND BOARD MOUNT  
M80-459XX98 = HOUSING + IOILOK JACKSCREW
- SUITABLE FOR PTFE INSULATED EQUIPMENT  
WIRE TO BS 3G 210 TYPE A, WIRE 22-28 AWG,  
WIRE INSULATION Ø0.6mm-Ø1.1mm. STRIP WIRE BY  
2.7-3.0mm FOR CRIMPING.
- RECOMMENDED CRIMP HEIGHTS:  
0.76-0.82mm FOR 22-24 AWG CONTACTS  
0.50-0.56mm FOR 26-28 AWG CONTACTS
- CRIMP SUITABLE FOR PROCESSING WITH HAND  
CRIMP TOOL Z80-255.
- FOR INSTRUCTIONS ON HAND CRIMP TOOL  
Z80-255, SEE INSTRUCTION SHEET IS-27.
- CONTACTS ARE AVAILABLE ON REELS, PART NUMBER  
M80-25600XX FOR 24-22 AWG WIRE AND  
M80-25700XX FOR 28-26 AWG WIRE, SUITABLE FOR  
PROCESSING WITH LEFT SIDE FEED CRIMPING PRESS.  
CONTACT [datamate@harwin.com](mailto:datamate@harwin.com) FOR DETAILS.

PART No.	DIMENSION	
	'A'	'B'
M80-29600XX	1.80	1.65
M80-29700XX	1.34	1.00

ORDER CODE: **M80-XXX00XX**

WIRE SIZE: \_\_\_\_\_  
296 = 24-22 AWG (0.22-0.34mm<sup>2</sup>)  
297 = 28-26 AWG (0.08-0.12mm<sup>2</sup>)

FINISH: \_\_\_\_\_  
45 = GOLD, ALL OVER  
42 = 100% TIN & GOLD, SELECTIVE

SM	5	15.11.11	11542
NAME	ISS.	DATE	C/NOTE
APPROVED: S. MCCULLAGH			
CHECKED: M. G. PLESTED			
DRAWN: MARK G PLESTED			
CUSTOMER REF.:			
ASSEMBLY DRG:			

**HARWIN**

[www.harwin.com](http://www.harwin.com)  
[technical@harwin.com](mailto:technical@harwin.com)

THIS DRAWING AND ANY  
INFORMATION OR DESCRIPTIVE  
MATTER SET OUT HEREON ARE  
CONFIDENTIAL AND COPYRIGHT  
PROPERTY OF THE HARWIN  
GROUP AND MUST NOT BE  
DISCLOSED, LOANED, COPIED  
OR USED FOR MANUFACTURING,  
TENDERING OR FOR ANY  
OTHER PURPOSE WITHOUT  
THEIR WRITTEN PERMISSION.

TOLERANCES  
X. = ±1mm  
X.X = ±0.25mm  
X.XX = ±0.10mm  
X.XXX = ±0.01mm  
ANGLES = ±5°  
UNLESS STATED

MATERIAL:

SEE ABOVE

FINISH: SEE ABOVE

S/AREA:

mm<sup>2</sup>

TITLE: DATAMATE TRIO-TEK  
FEMALE CRIMP CONTACT LOOSE  
24-22 AWG & 28-26 AWG

DRAWING NUMBER:

**M80-29600XX & M80-29700XX**

SHT  
2 OF 2

# Mouser Electronics

Authorized Distributor

Click to View Pricing, Inventory, Delivery & Lifecycle Information:

Harwin:

M80-2960042