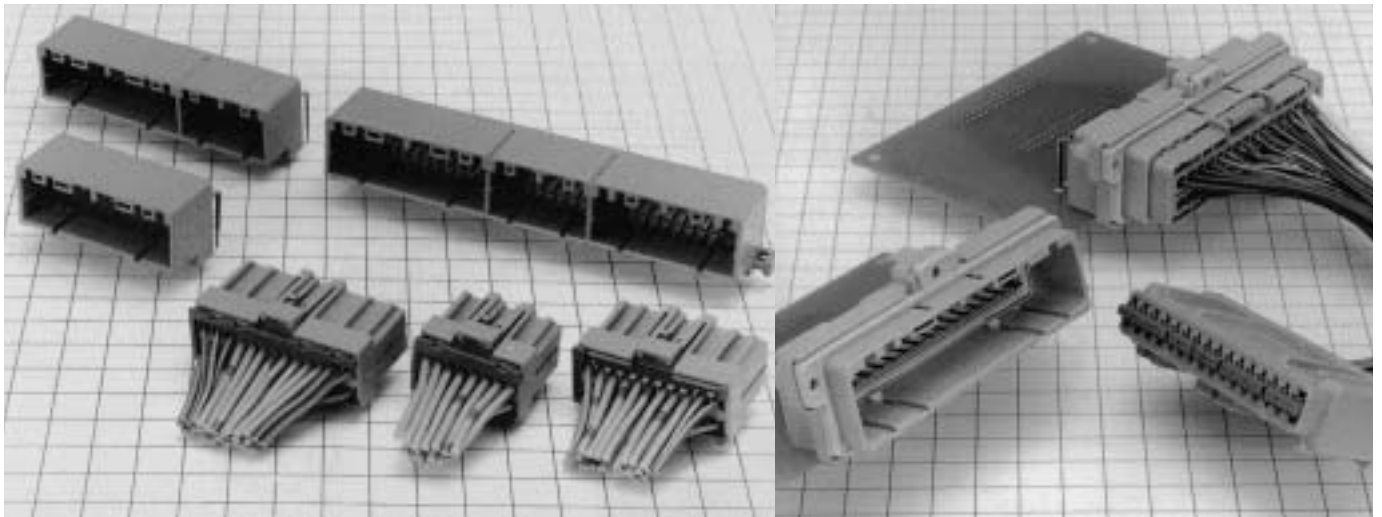


# GT7 Series

<GT7, GT7A, and GT7W>



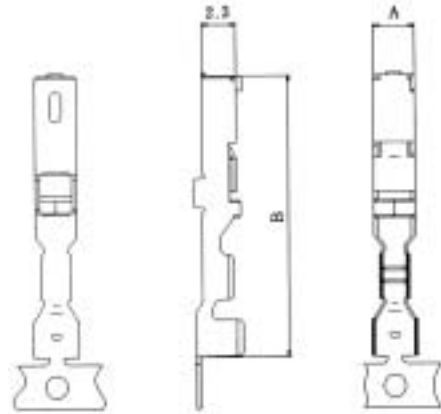
## Features

- These automotive crimp terminals are equivalent to 040 and 070 tab width items.
- The contact portion of the F connector side has been given a double structure to make these connectors compatible with low insertion force and high contact pressure at the time of coupling.
- In this design, the contact portion is housed in a box that is formed by a press. This prevents the contact portion from being misshapen by an external force.
- The design of the waterproof connectors uses a 2-stage sequence having a low insertion force.

\* A partial gold plating specification can be applied to only the terminals specified by the customer.

## F Connectors

### ● Terminals



Part Number	CL No.	Material	Finish	Outer Diameter	A dimension	B dimension	Packaging
GT7-2022SCF	757-0001-1	Copper alloy	Tin plating	1.4 to 2.4	2.8	19	5,000 pcs. per reel
GT7A-2022SCF	757-0003-7			2.6 to 3.1			3,000 pcs. per reel
GT3-2024SCF	753-0006-0			1.4 to 2.4	2.3	15.7	5,000 pcs. per reel

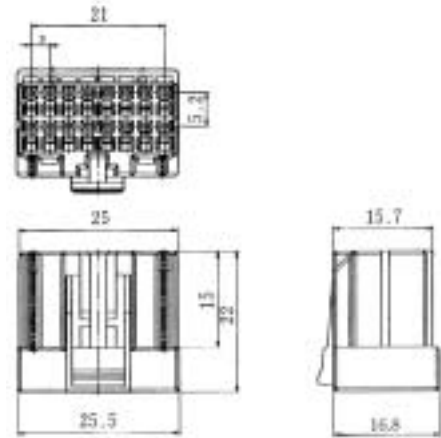
Note 1: Sold by the reel.

Note 2: This component is used only with applicable HRS housings.

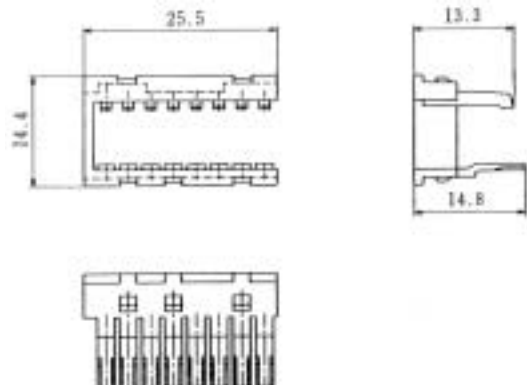
### ● Housing **16 Pos.**



Part Number	CL No.	Material
GT7-16DS-HU	757-0008-0	PBT



### ● Retainer (Used with GT7-16DS-HU)

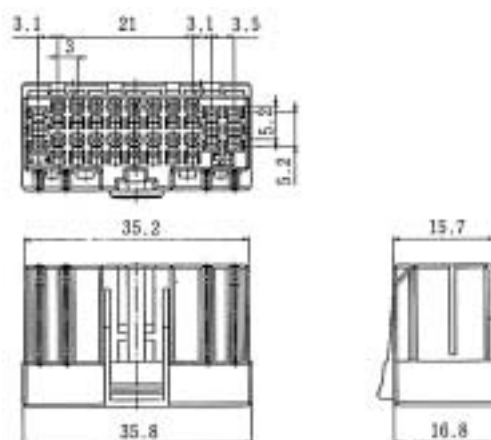


Part Number	CL No.	Material
GT7-16R	757-0010-2	PBT

● Housing **22 Pos.**



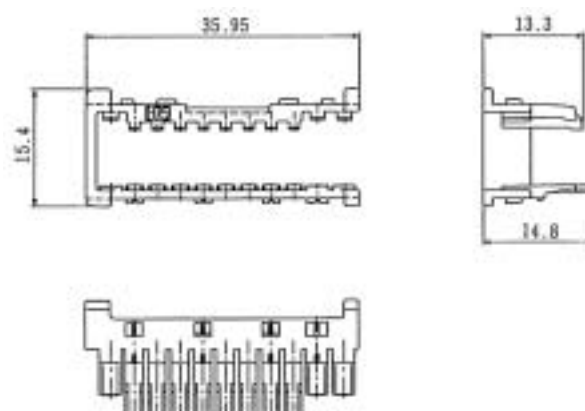
Part Number	CL No.	Material
GT7-22DS-HU	757-0015-6	PBT



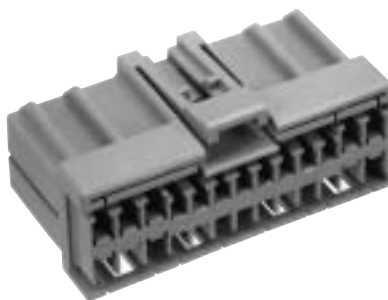
● Retainer (Used with GT7-22DS-HU)



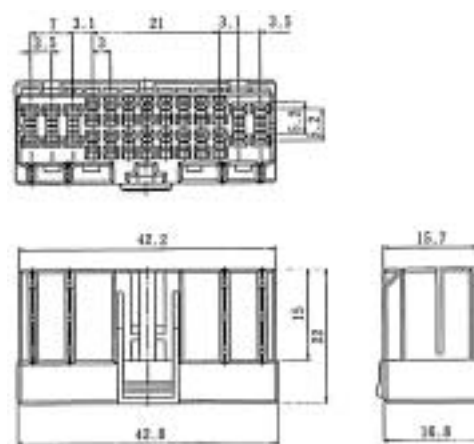
Part Number	CL No.	Material
GT7-22R	757-0016-9	PBT



● Housing **26 Pos.**



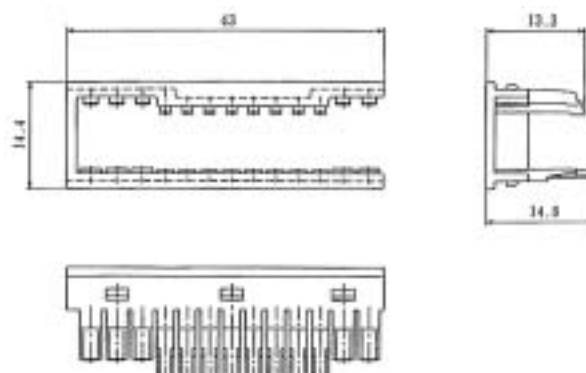
Part Number	CL No.	Material
GT7-26DS-HU	757-0009-3	PBT



● Retainer (Used with GT7-26DS-HU)



Part Number	CL No.	Material
GT7-26R	757-0011-5	PBT

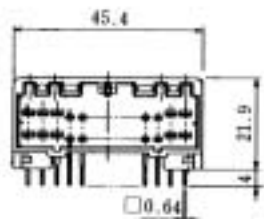
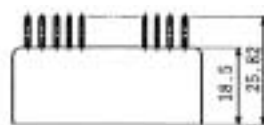


**M Connectors**

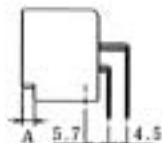
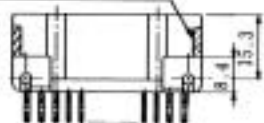
● Board Type **26 Pos.**



Mates with a 26-pos. F connector.

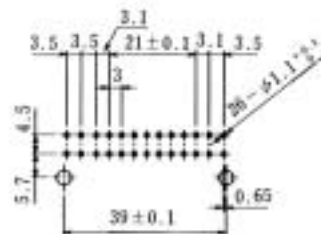


GT7 has shaded portion without standoff.



### Recommended Board Mounting Pattern

(Tolerance of unmarked values is  $\pm 0.05$ .)



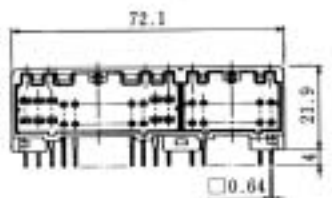
Part Number	CL No.	A
GT7A-26DP-DS	757-0014-3	3
GT7-26DP-DS	757-0006-5	Shaded portion without stand-off

● **Board Type / Hybrid Type**

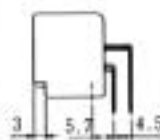
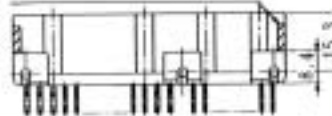
## 42 Pos.



Mates with a 26-pos. + 16-pos. F connector.

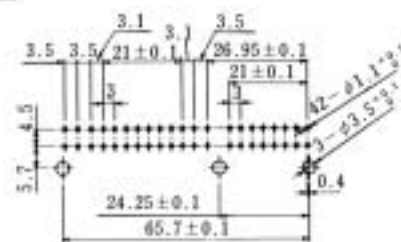


GT7 has shaded portion without standoff.



### Recommended Board Mounting Pattern

(Tolerance of unmarked values is  $\pm 0.05$ .)



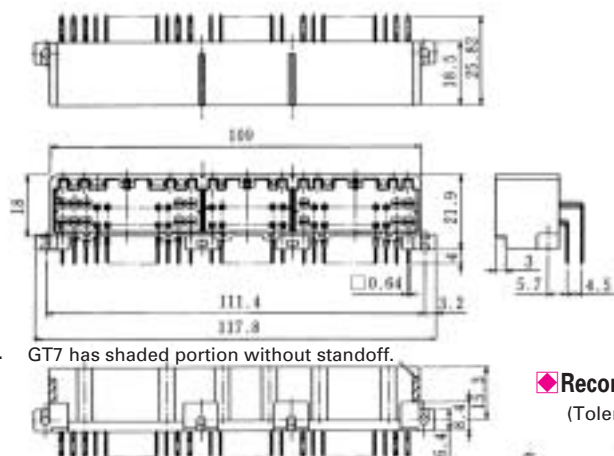
Part Number	CL No.	A
GT7A-42DP-DS	757-0013-0	3
GT7-42DP-DS	757-0007-8	Shaded portion without stand-off

## ● Board Type / Hybrid Type

**64 Pos.**

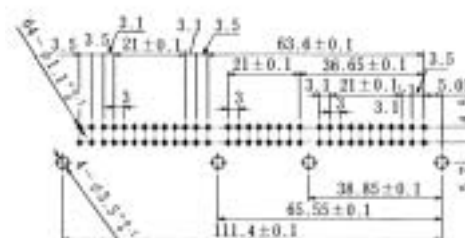


Mates with a 26-pos. + 16-pos. + 22-pos. F connector.



GT7 has shaded portion without standoff.

### ◆ Recommended Board Mounting Pattern (Tolerance of unmarked values is $\pm 0.05$ .)



Part Number	CL No.	A
GT7A-64DP-DS	757-0012-8	3
GT7-64DP-DS	757-0005-2	Shaded portion without stand-off

## ◆ Termination Tools

User's manuals are available. Please ask your Hirose Electric account representative.

### Automatic Crimping Machine



Part number CM-105

Item	Specification	Remarks
Specification	1.5ton	
Stroke Length	30mm	
Number of strokes	200spm(50 Hz)	240spm(60 Hz)
Weight	75 kg	
Motor	0.2kw	AC100V
Crimping speed	2,000 to 4,000 pcs. per hour	

### Hand Tool



Crimp height setting tables are available for each cable type. Please contact your nearest Hirose Electric account representative. Different cables will require different crimp height settings.

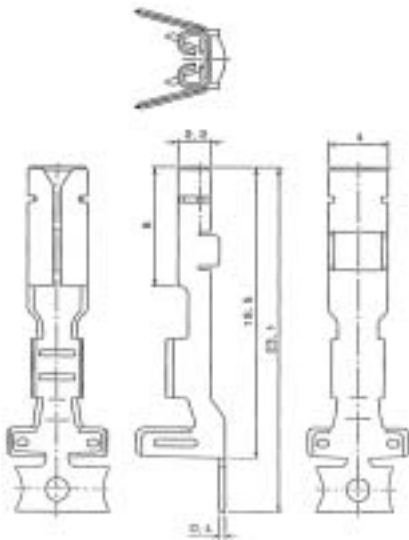
Waterproof Type

F Connectors

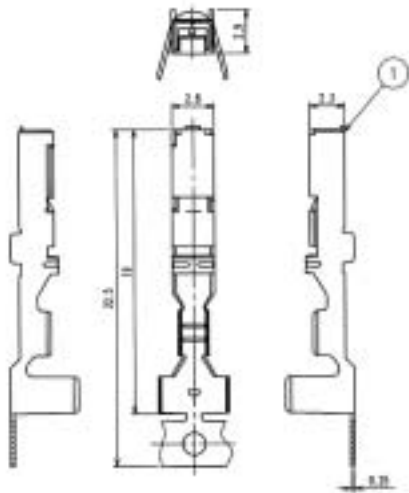
● Terminals



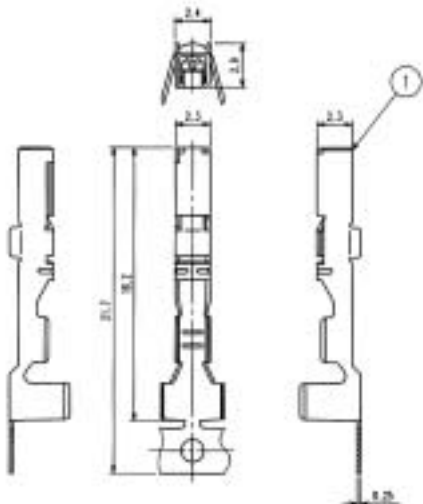
Part Number	CL No.	Packaging
GT7W-1416SCF	757-0031-2	3,000 pcs. per reel



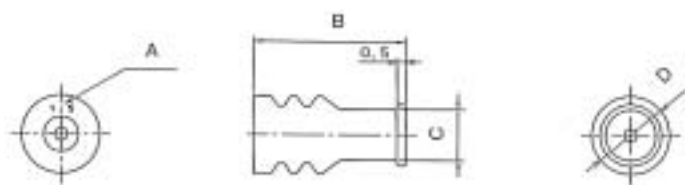
Part Number	CL No.	Packaging
GT7W-2022SCF	757-0017-1	5,000 pcs. per reel



Part Number	CL No.	Packaging
GT3W-2024SCF	753-0016-3	5,000 pcs. per reel

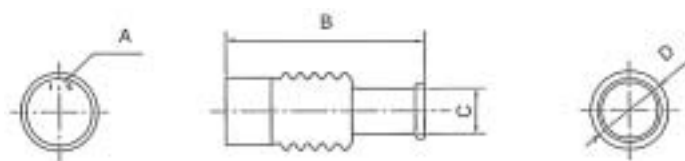


## ● Wire Seal



Part No.	CL No.	A	B	C	D	Color	Outer diameter of the cable
GT7W-1.5WS	757-0025-0	1.50	8.40	2.8	4.3	Blue	1.5 mm
GT7W-1.9WS	757-0026-2	1.90	8.40	3.2	4.7	Pink	1.9 mm
GT7W-3.4WS	757-0027-5	3.40	8.55	4.4	5.9	Pink	3.4 mm

## ● Dummy Seal



Part No.	CL No.	A	B	C	D	Color
GT7W-1.5DS	757-0028-8	1.50	10.90	2.5	4.3	Blue
GT7W-1.9DS	757-0029-0	1.90	10.40	2.9	4.7	Pink
GT7W-3.4DS	757-0030-0	3.40	10.70	5.9	5.9	Pink

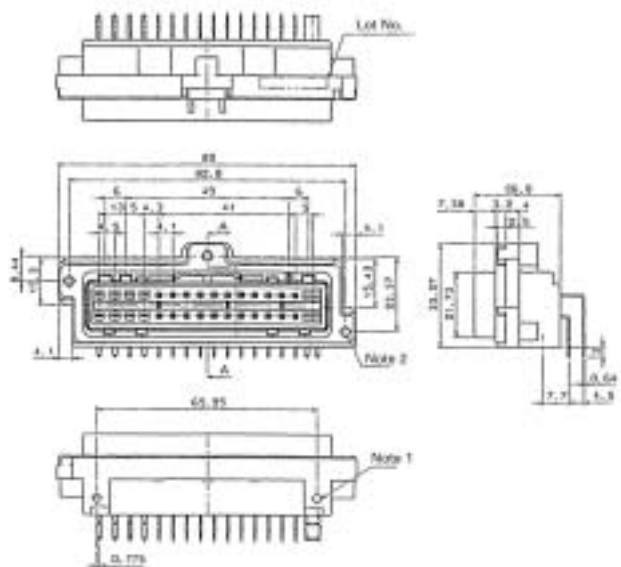
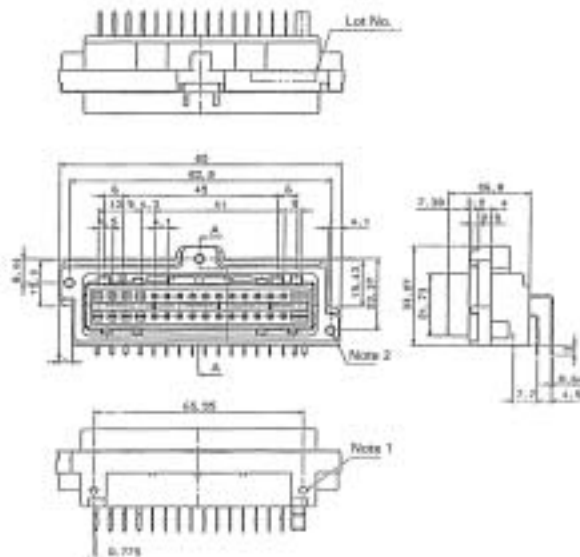








●



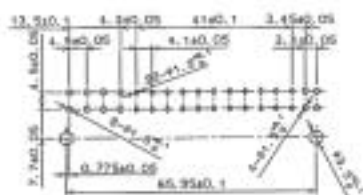
Part Number	CL No.	Key polarizing code	Color
GT7W-32DP-DSL	757-0019-7	A	Black
GT7W-32DP-DSR	757-0020-6	B	Light gray

Note 1: Use mounting screws of M3 with nominal diameter 3L-6.

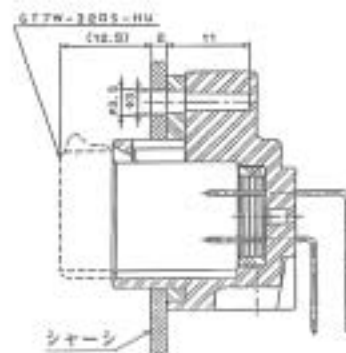
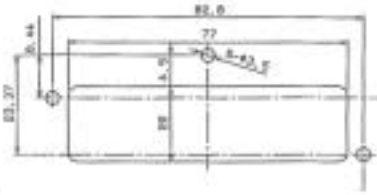
Note 2: Use mounting screws of M3 with nominal diameter 3L-12.

Note 3: Tightening torque for the screws is 34.3 to 39.2 N.cm.

### Recommended Board Mounting Pattern



 **Recommended Panel Cut-out**



## ◆ Wiring Tools

Operation manuals are available for the various wiring tools. Please contact a Hirose Electric account representative.

### Automatic Crimping Machine



Product number CM-105

Item	Specification	Remarks
Specification	1.5ton	
Stroke Length	30mm	
Number of strokes	200spm(50 Hz)	240spm(60 Hz)
Weight	75 kg	
Motor	0.2kw	AC100V
Crimping speed	2,000 to 4,000 pcs. per hour	